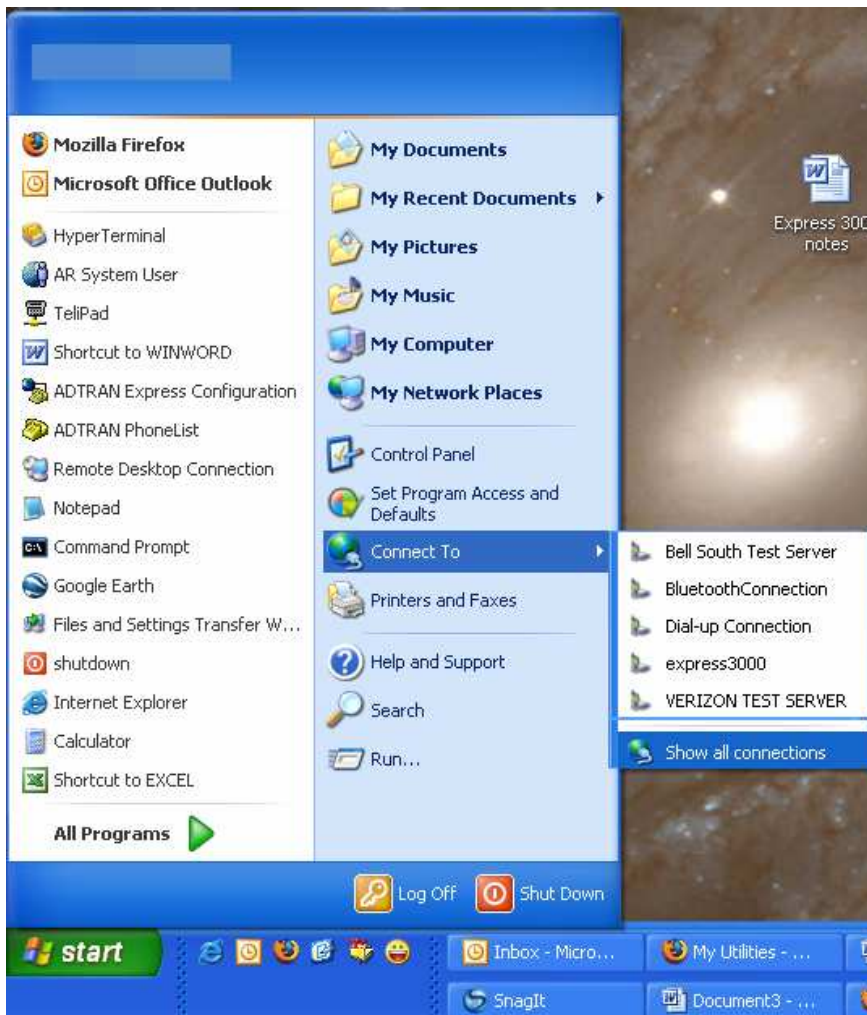
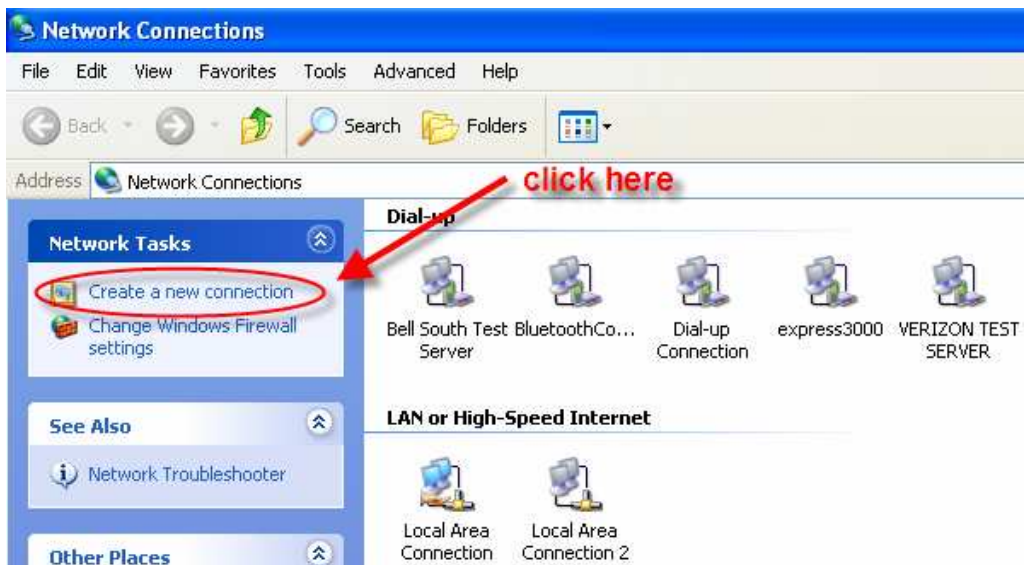


SETTING UP DIAL UP NETWORKING IN WINDOWS XP FOR THE ADTRAN EXPRESS 3000



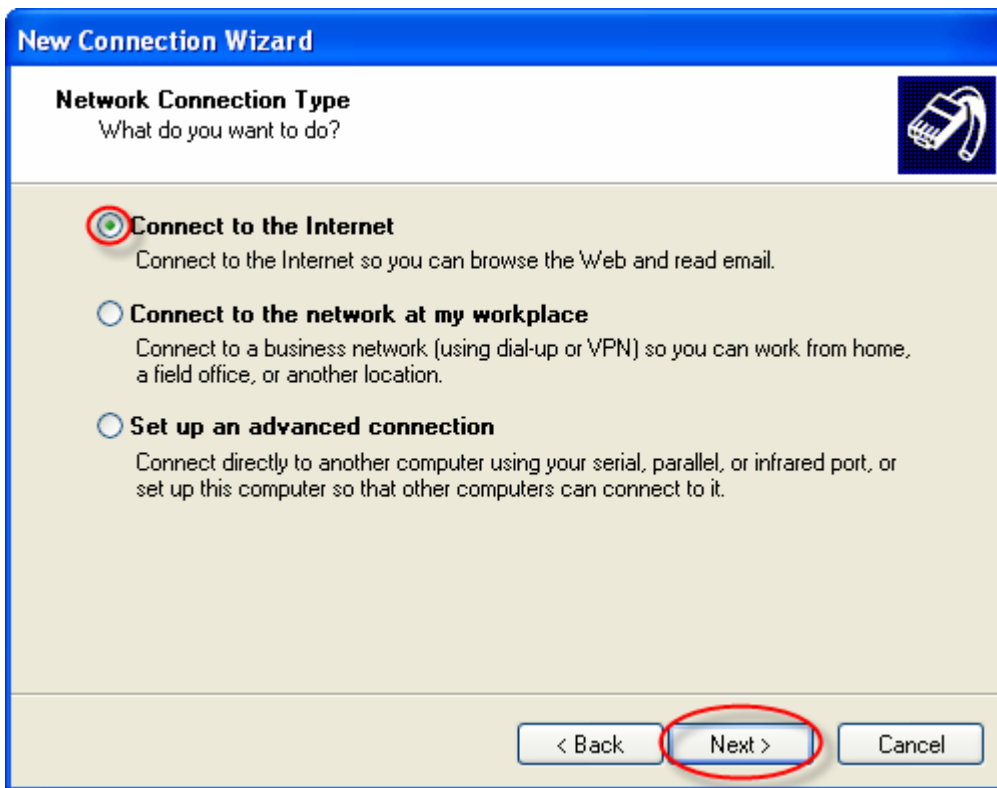
1. Go to Start
2. All Programs
3. Connect To
4. Show all Connections



5. Click on “Create a new connection.”

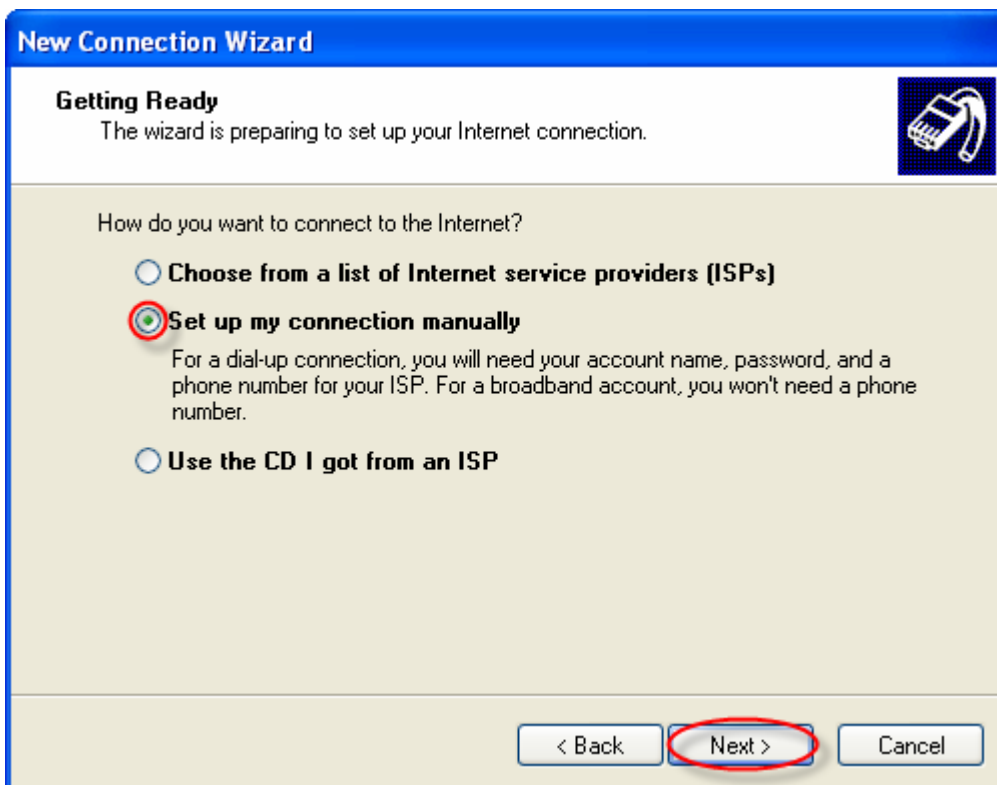


6. Once the Wizard pops up click “NEXT”.



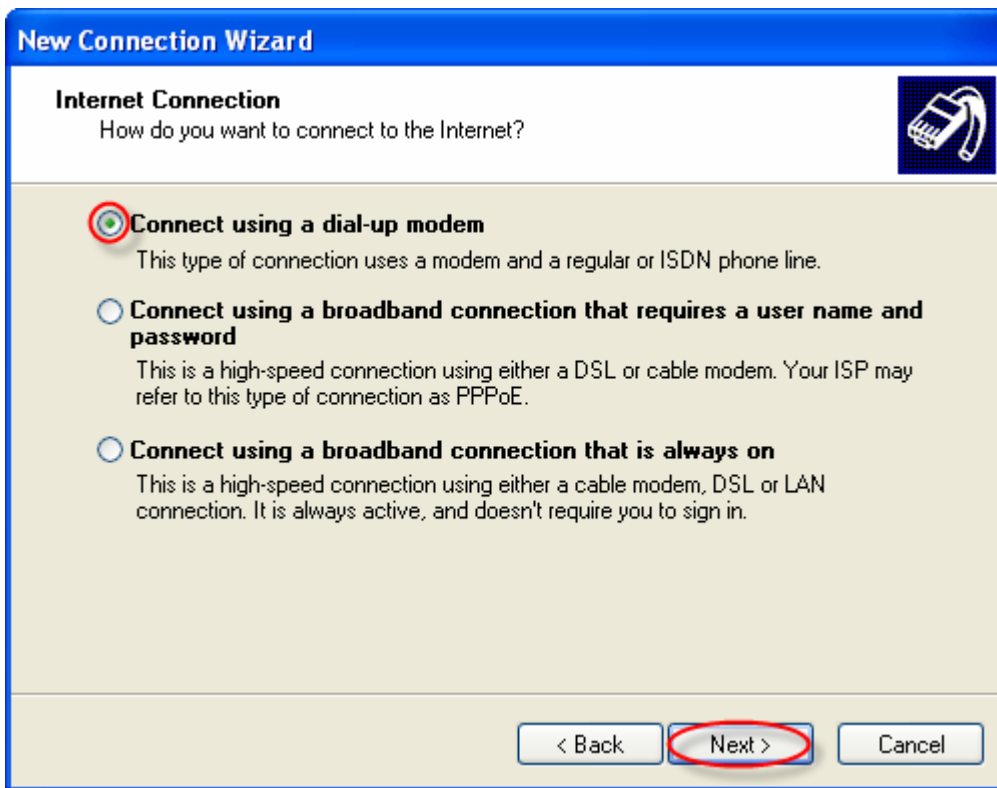
7. Make sure “Connect to the Internet” is selected.

8. Click Next



9. Select “Set up my connection manually”

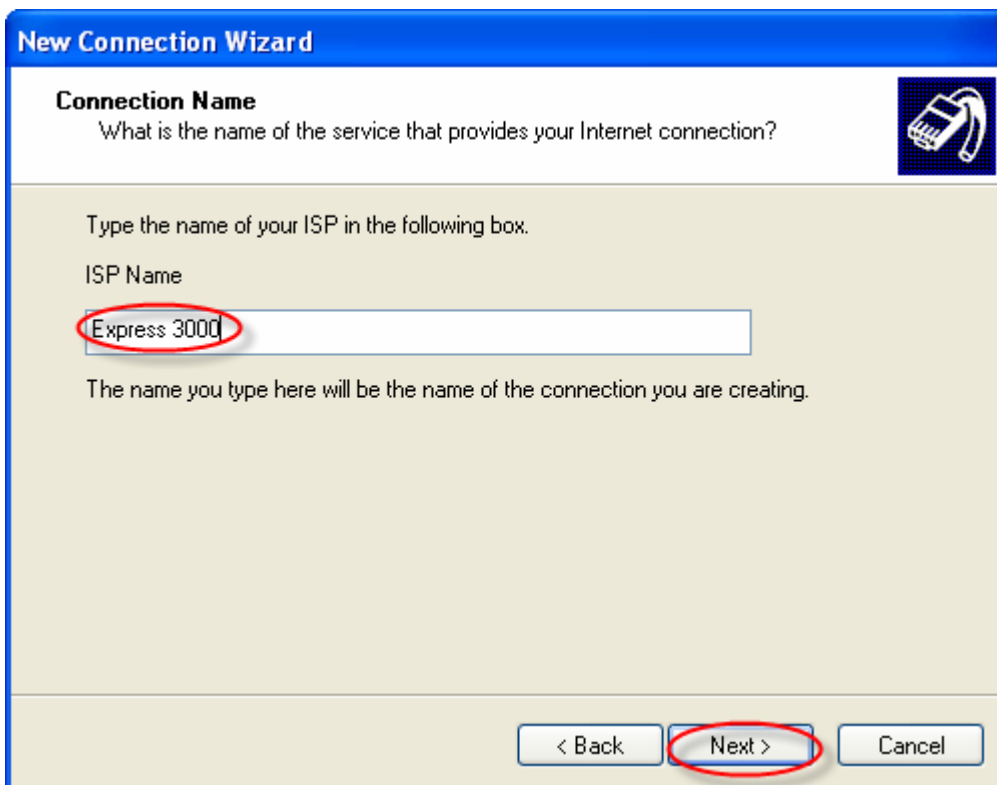
10. Click Next



11. Select “Connect using a dial-up modem.”

12. Click Next.

Note: If you are asked to select a device, select Modem – ADTRAN Express 3000 (Com1). Also note that your Express may actually be on a different COM port.



13. Enter a name for your ISP.

14. Click Next.

New Connection Wizard

Phone Number to Dial
What is your ISP's phone number?

Type the phone number below.

Phone number:

You might need to include a "1" or the area code, or both. If you are not sure you need the extra numbers, dial the phone number on your telephone. If you hear a modem sound, the number dialed is correct.

< Back **Next >** Cancel

15. Enter the phone number for your ISP.
Note: Your ISP must be an ISDN compliant provider.

16. Click Next.

New Connection Wizard

Connection Availability
You can make the new connection available to any user or only to yourself.

A connection that is created for your use only is saved in your user account and is not available unless you are logged on.

Create this connection for:

Anyone's use
 My use only

< Back **Next >** Cancel

16. Set who will use the connection on your computer. If more than one user uses the computer, select Anyone's use. This is the default setting.

17. Click Next

New Connection Wizard

Internet Account Information

You will need an account name and password to sign in to your Internet account.

Type an ISP account name and password, then write down this information and store it in a safe place. (If you have forgotten an existing account name or password, contact your ISP.)

User name:

Password:

Confirm password:

Use this account name and password when anyone connects to the Internet from this computer

Make this the default Internet connection

< Back Next > Cancel

18. Enter in your user name and password information.
19. Click Next.

New Connection Wizard

Completing the New Connection Wizard

You have successfully completed the steps needed to create the following connection:

Express 3000

- Make this the default connection
- Share with all users of this computer
- Use the same user name & password for everyone

The connection will be saved in the Network Connections folder.

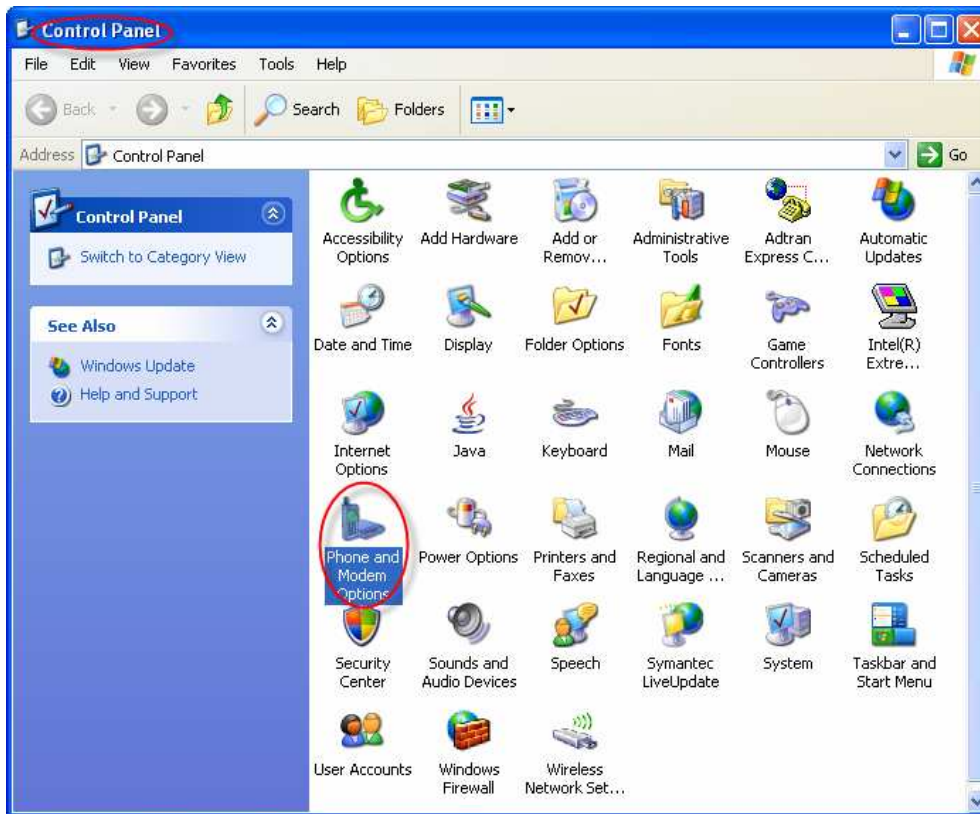
Add a shortcut to this connection to my desktop

To create the connection and close this wizard, click Finish.

< Back Finish Cancel

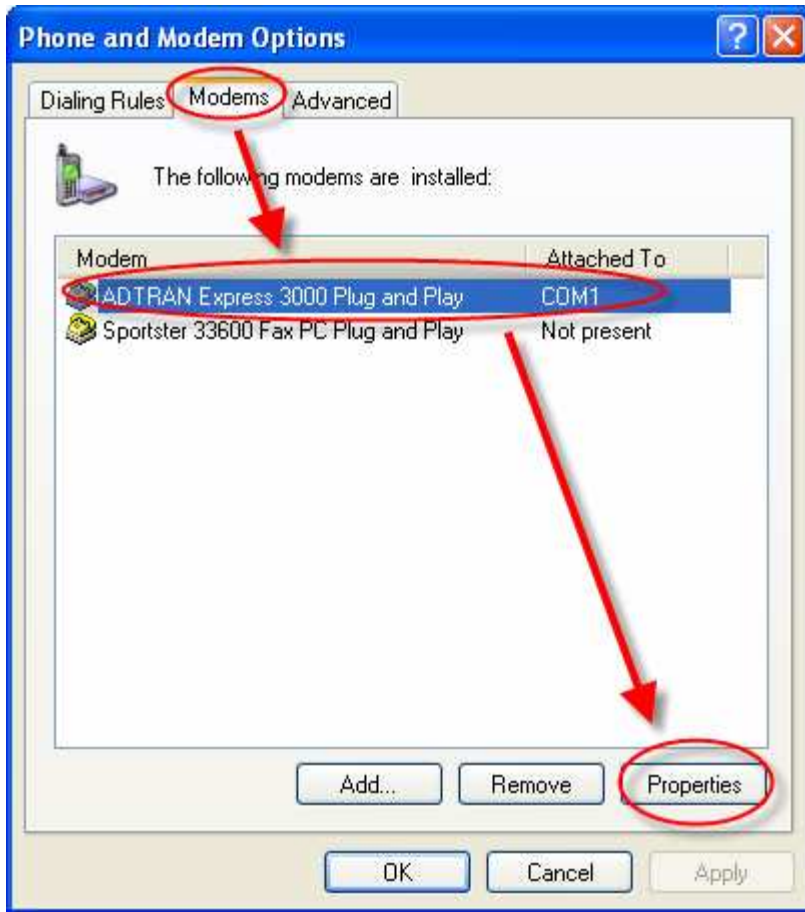
20. Click Finish

Editing Modem Properties



20. Go to the Start Menu and go into Control Panel.

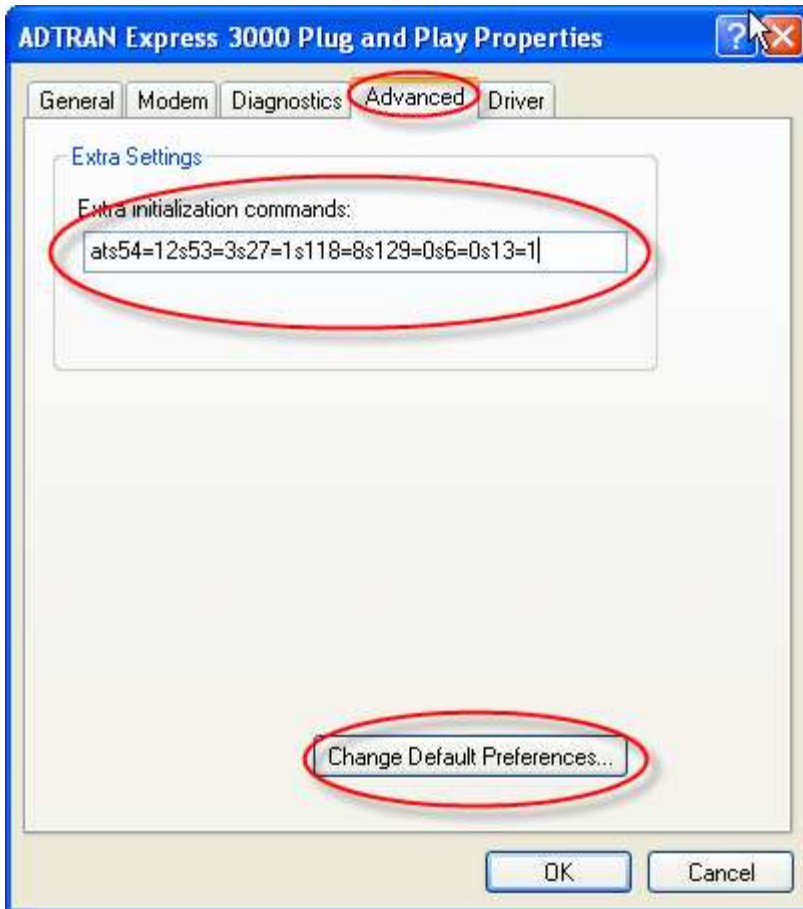
21. Double Click on "Phone and Modem Options."



22. Select the “Modems” tab.

23. Select ADTRAN Express 3000 Plug and Play.

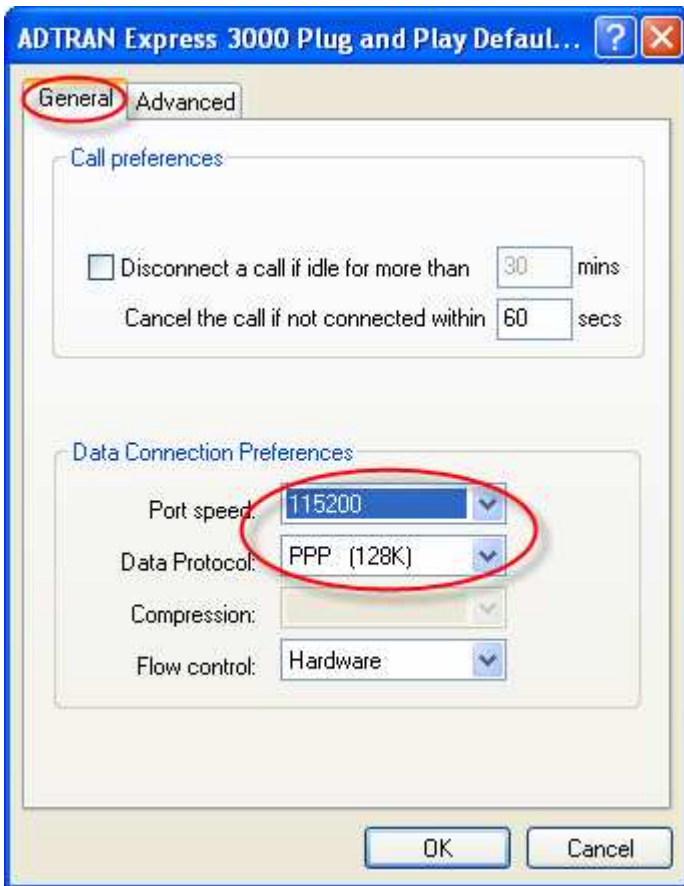
24. Click on the Properties button.



25. Click on the Advanced Tab.

26. Enter the initialization commands shown in the graphic.

27. Click on Change Default Preferences.



28. Select the General Tab
29. Ensure the settings reflect that shown in the graphic. If it is grayed out, disregard this step.
30. Click OK and close everything back to the desktop.
31. Now Reboot your computer and dial.